

TRINITY HIGH
&
St JOSEPH
REGIONAL Jr HIGH
CO-LOCATION PROJECT

PROJECT DESIGN
PREVIEW
PRESENTATION

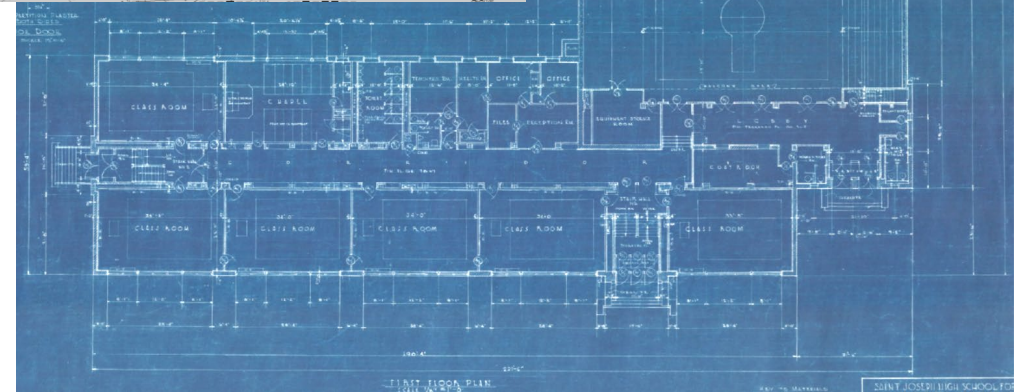
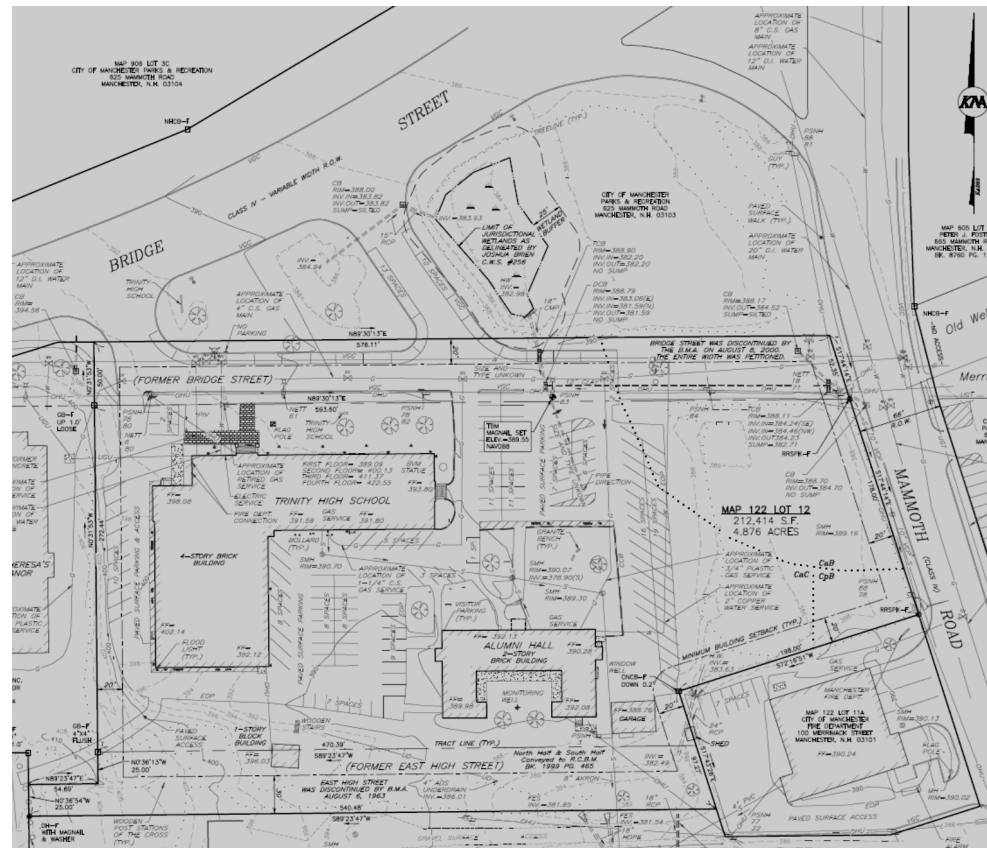


HISTORY AND PROJECT GOALS

- ❑ Move St Joseph Jr. High to same site as Trinity High School. Expand capacity for both schools and Cardinal LaCroix Elementary
- ❑ Needs Analysis
- ❑ Solve issues at Trinity High School including:
 - Handicap Accessibility
 - Secure Entrance
 - Parking Configuration
 - Program Deficiencies

ADDITIONAL GOALS

- ❑ Larger Chapel
- ❑ Second Gymnasium/Auditorium



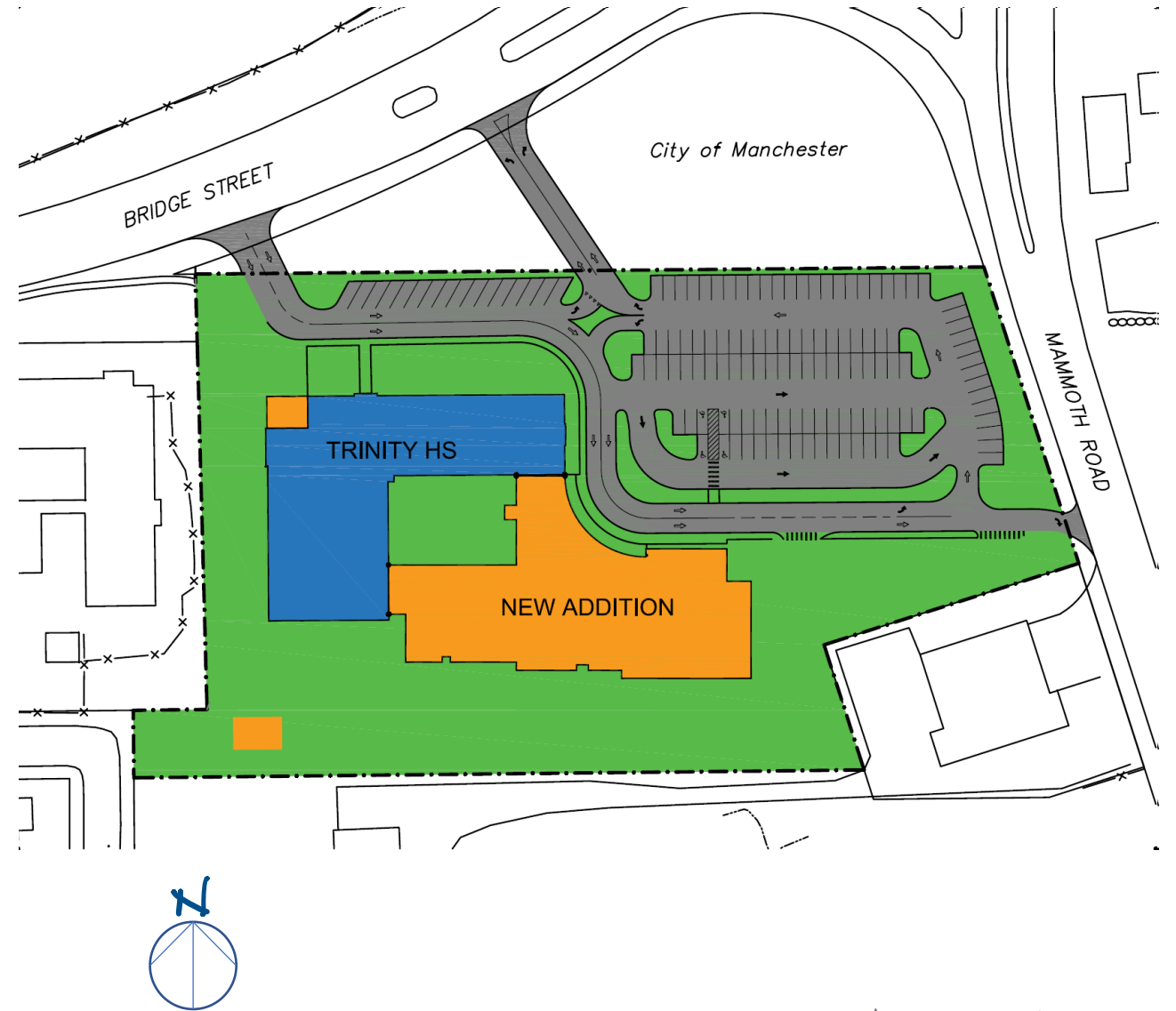
SITE DESIGN

- ❑ Trinity HS is located on an urban lot strategically located at the intersection of Bridge St and Mammoth Rd.
- ❑ Alumni Hall will be demolished to make room for the new addition.
- ❑ The addition will connect to the high school in two locations and create an internal courtyard.



SITE DESIGN

- ❑ Trinity HS is located on an urban lot strategically located at the intersection of Bridge St and Mammoth Rd.
- ❑ Alumni Hall will be demolished to make room for the new addition.
- ❑ The addition will connect to the high school in two locations and create an internal courtyard.
- ❑ The driveways will be reconfigured to form a car drop-off zone and expanded student parking with a secondary exit to Mammoth Rd.



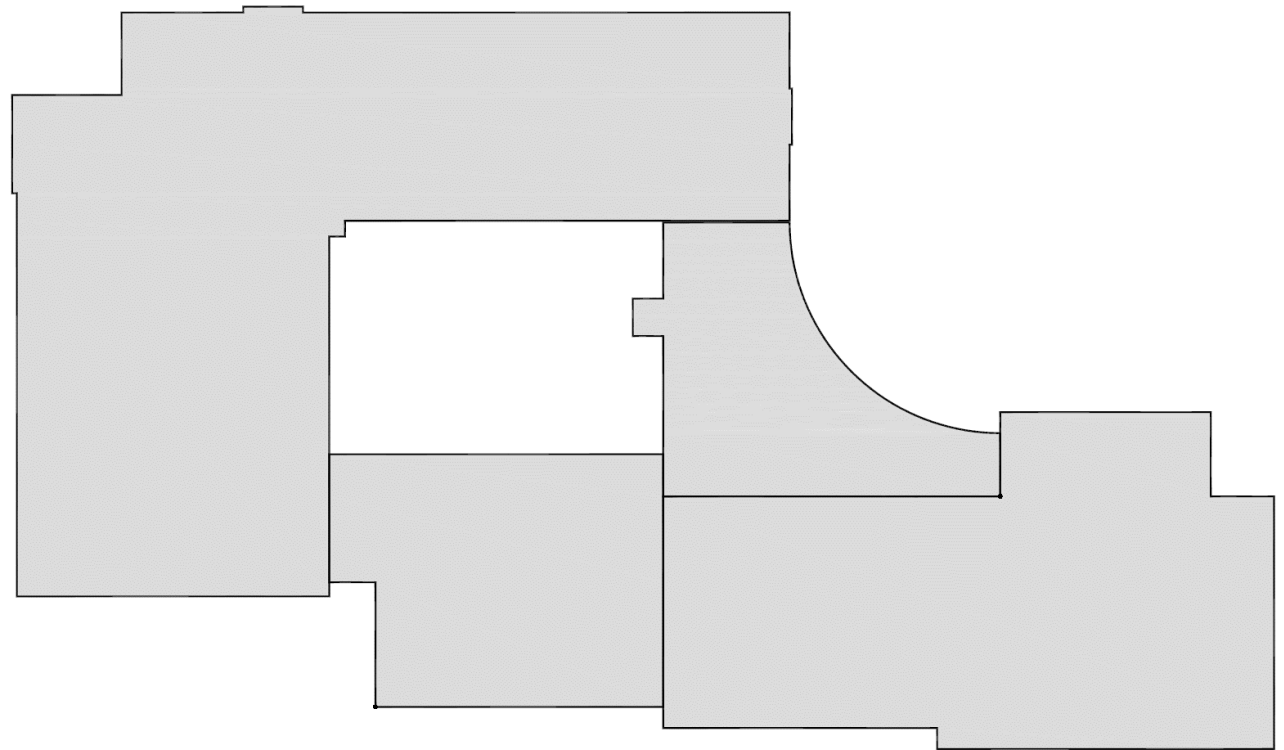
SITE DESIGN

- ❑ Trinity HS is located on an urban lot strategically located at the intersection of Bridge St and Mammoth Rd.
- ❑ Alumni Hall will be demolished to make room for the new addition.
- ❑ The addition will connect to the high school in two locations and create an internal courtyard.
- ❑ The driveways will be reconfigured to form a car drop-off zone and expanded student parking with a secondary exit to Mammoth Rd.
- ❑ A driveway in the back will be for staff parking, busses, emergency vehicles and deliveries.
- ❑ There will be a new front entrance and an expanded gymnasium entrance.



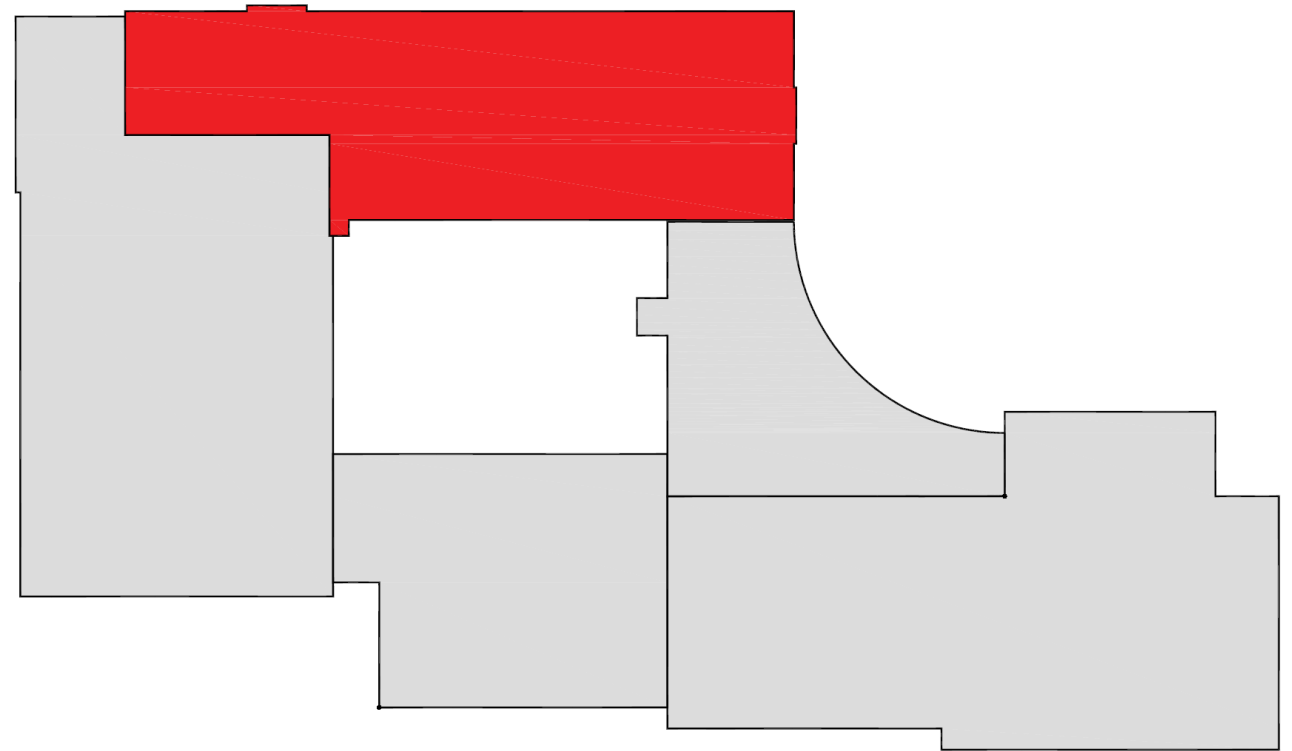
Building Configuration

- ❑ One Building, Two Schools.



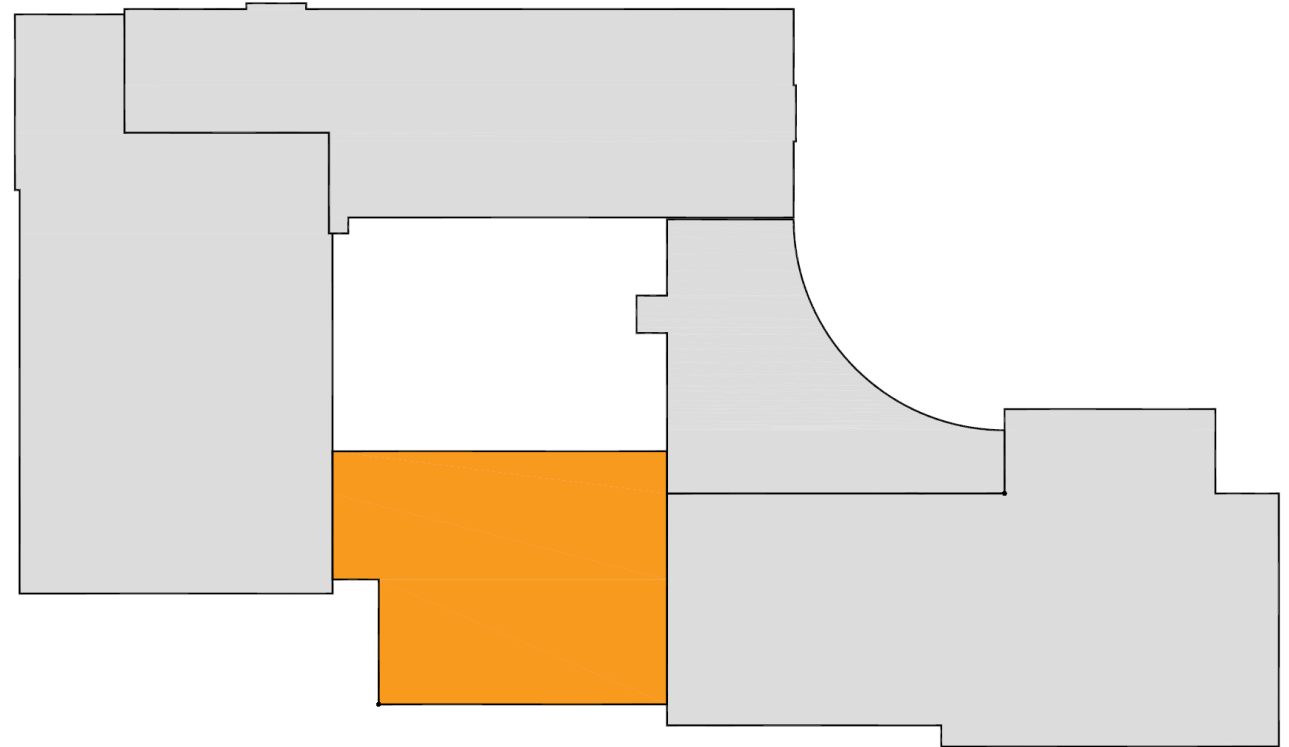
Building Configuration

- ❑ One Building, Two Schools.
- ❑ High School remains in the existing 4-story classroom wing.



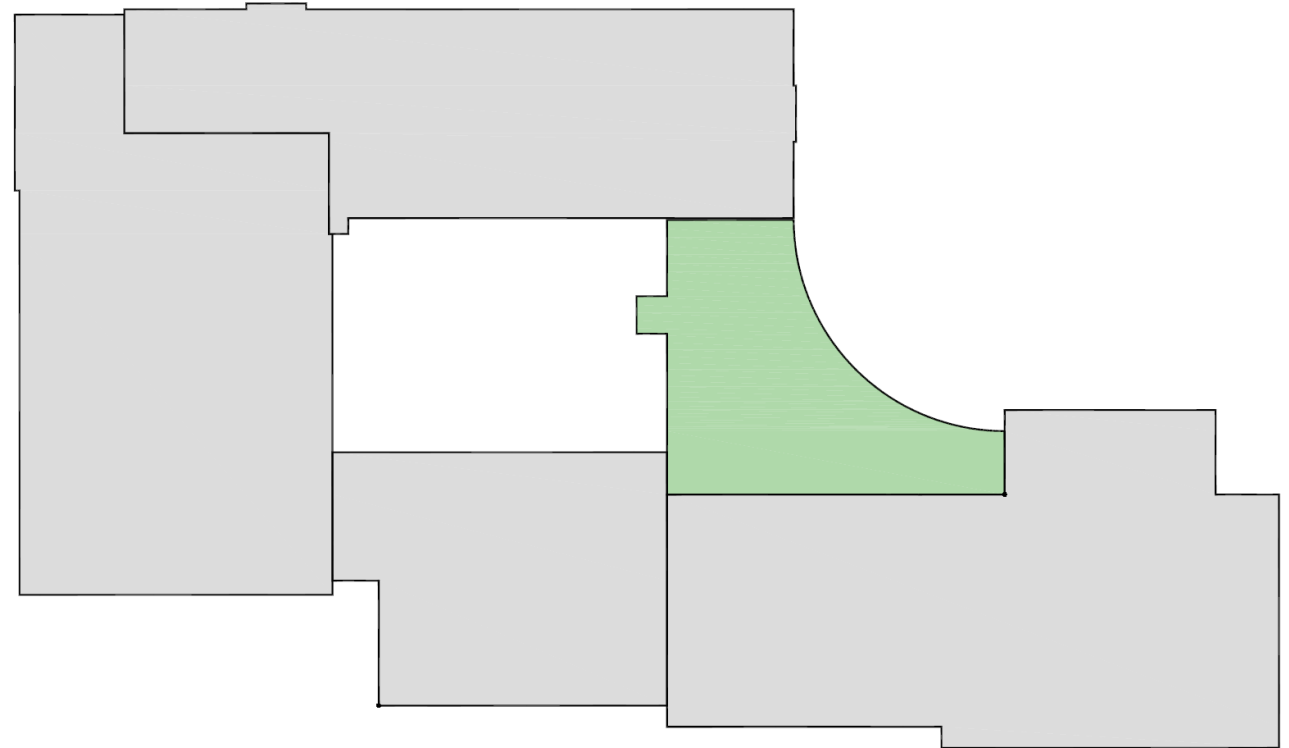
Building Configuration

- ❑ One Building, Two Schools.
- ❑ High School remains in the existing 4-story classroom wing.
- ❑ Jr. High School is in the addition in a new 3-story classroom wing.



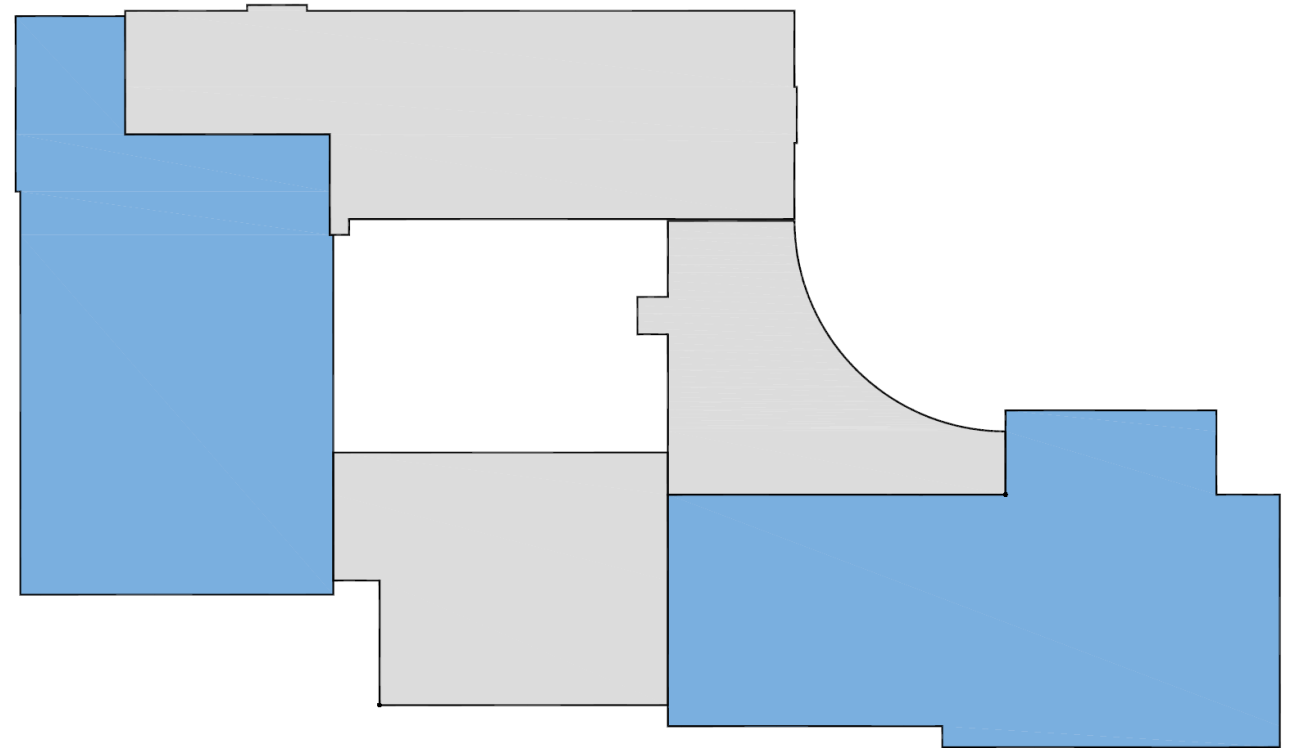
Building Configuration

- ❑ One Building, Two Schools.
- ❑ High School remains in the existing 4-story classroom wing.
- ❑ Jr. High School is in the addition in a new 3-story classroom wing.
- ❑ There is a new Main Office that services both schools.



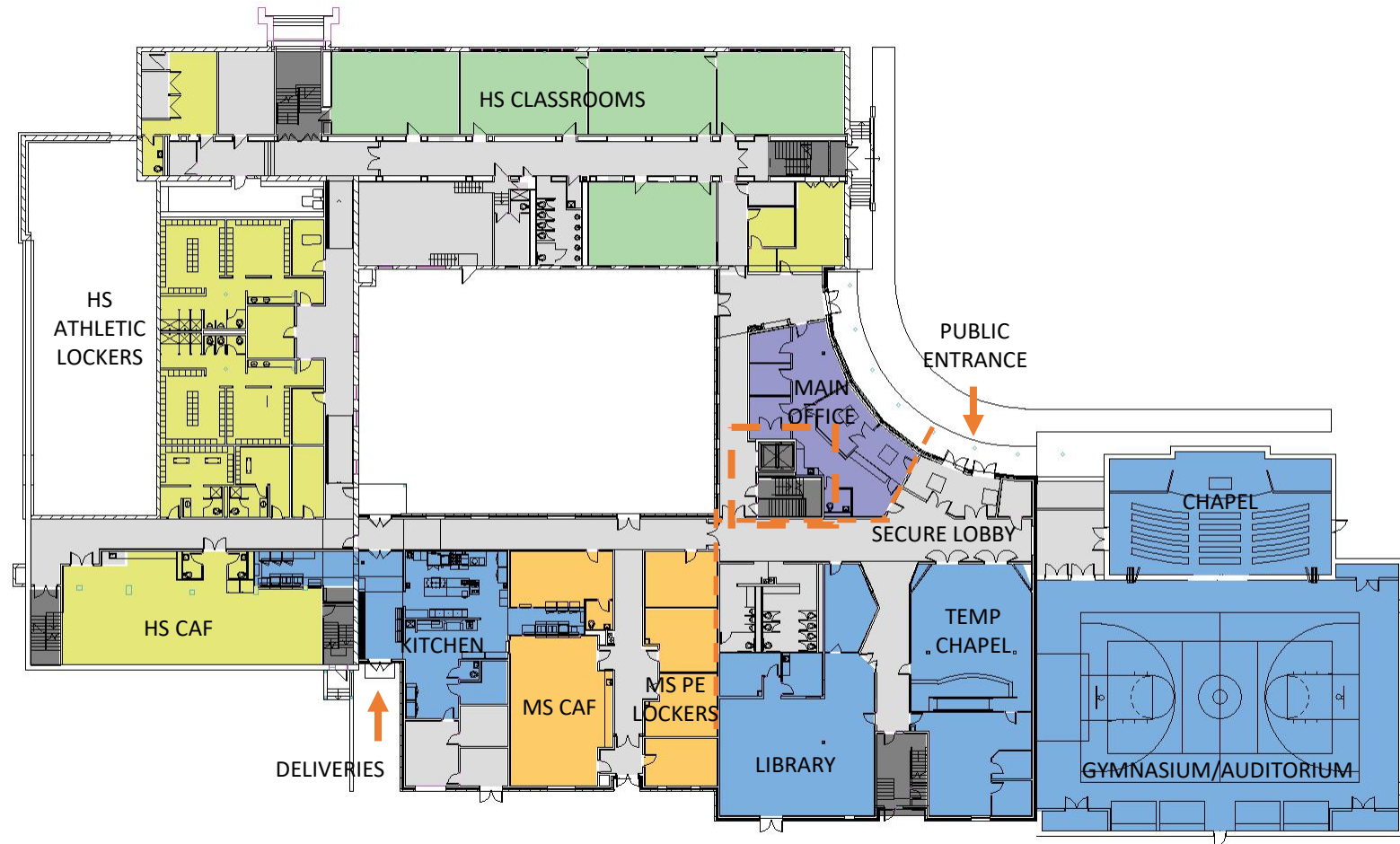
Building Configuration

- ❑ One Building, Two Schools.
- ❑ High School remains in the existing 4-story classroom wing.
- ❑ Jr. High School is in the addition in a new 3-story classroom wing.
- ❑ There is a new Main Office that services both schools.
- ❑ Shared programs such as the new Gymnasium/Auditorium, Chapel, and Library are in a wing off the Main Office.



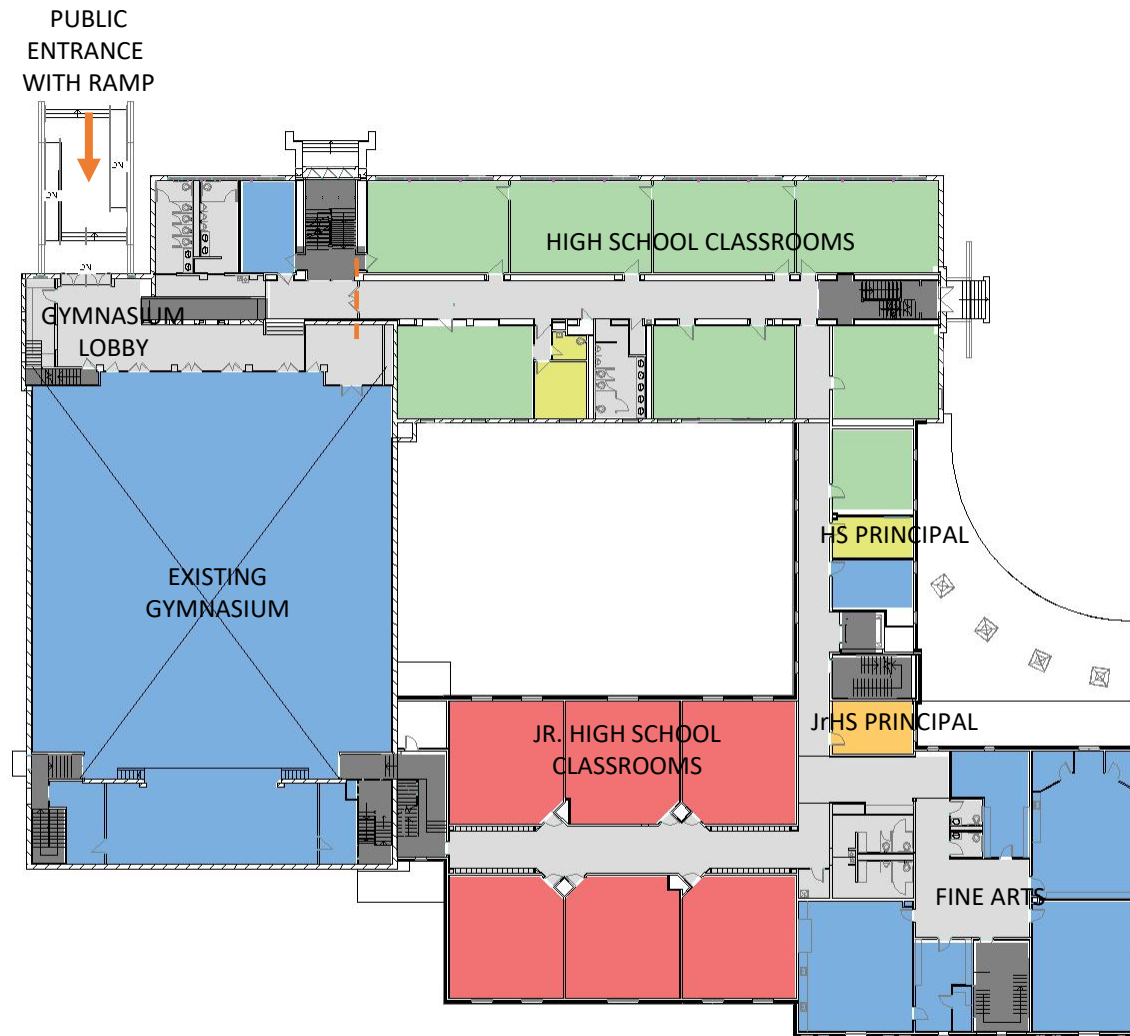
First Floor

- ❑ First Floor is even with what is currently the ground floor of the High School and is at the level of the parking lot.
- ❑ The Main Office oversees a Public Entrance. A Secure Lobby provides allows for locking the Auditorium, Chapel and Library off from the schools for after-hours public use.
- ❑ Both schools are connected on all levels with an elevator and stair.
- ❑ Deliveries for the kitchen are made behind the building.
- ❑ Kitchen serves both the High School and Jr. High School cafeterias.
- ❑ Athletic locker rooms are located near the cafeterias.
- ❑ Rooms in the High School Wing that have moved to other areas of the building are converted to classrooms.



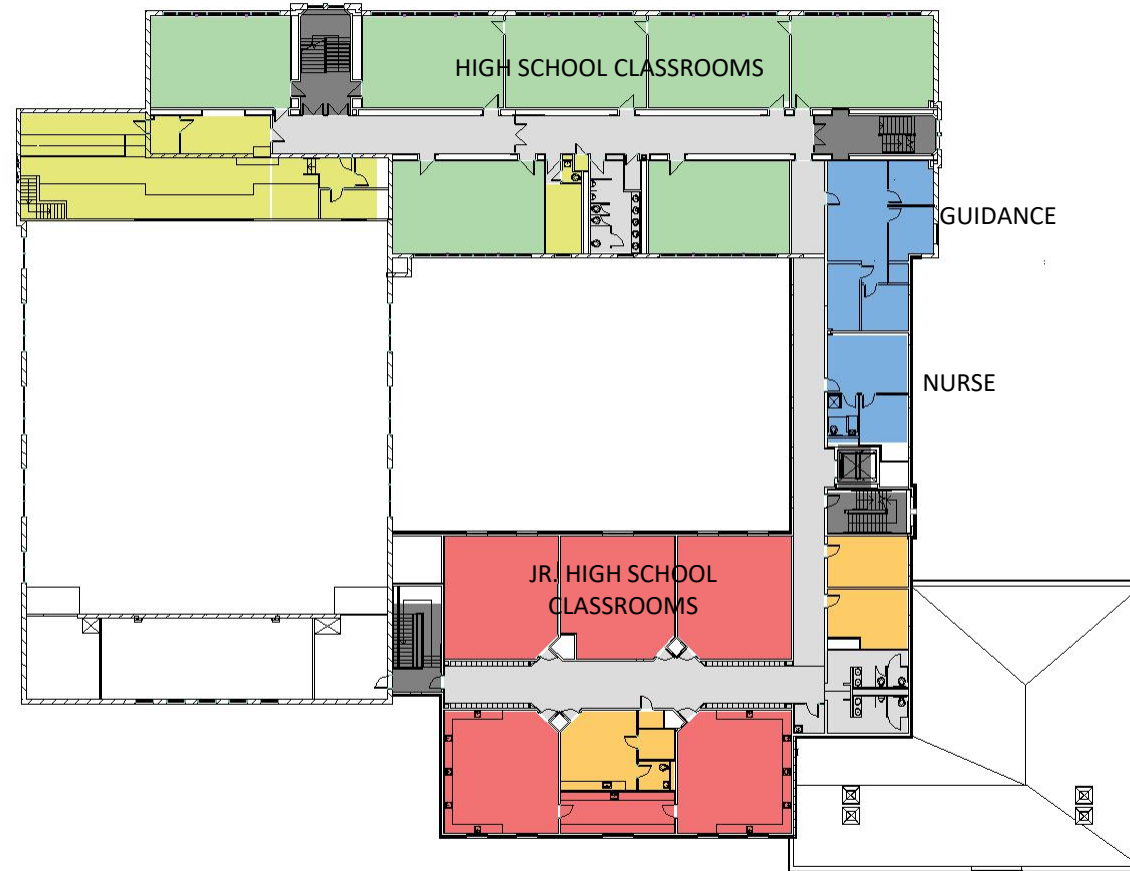
Second Floor

- ❑ The existing Gymnasium Entrance and Gymnasium Lobby will be renovated for handicap accessibility and new public toilet rooms.
- ❑ This area will be able to be locked off from the rest of the school for after-hours use.
- ❑ High School and Jr. High School classrooms are in separate wings with The High School and Jr. High School Principals located in between.
- ❑ The Fine Arts wing is located next to the Auditorium with a stair connecting to it the two levels.



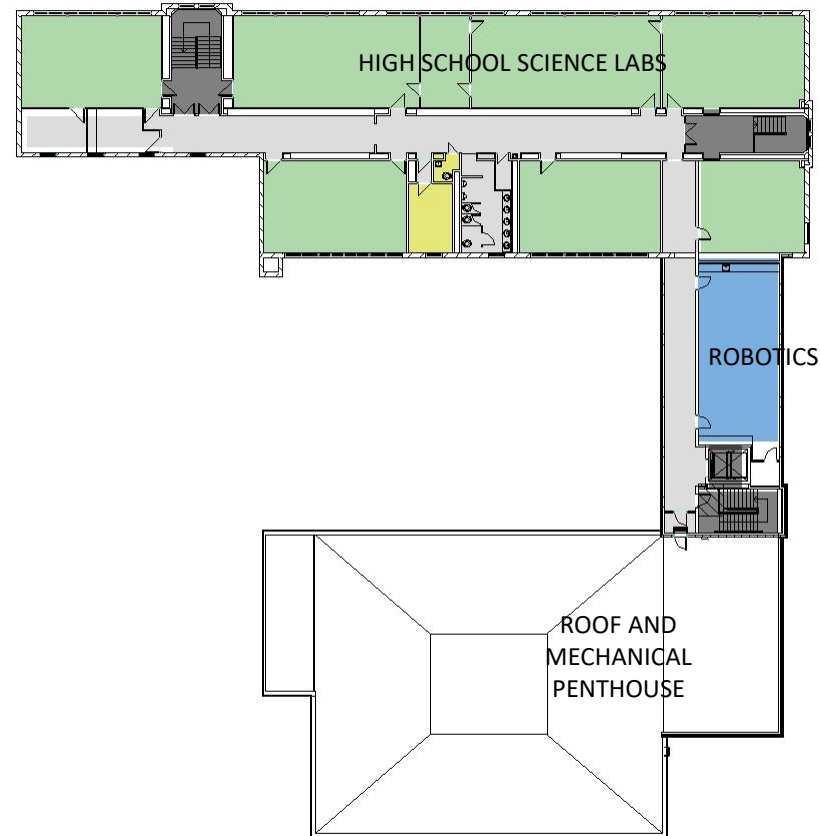
Third Floor

- ❑ The third floor has a smaller footprint than the lower two floors because the gymnasium, auditorium, main office and fine arts wing are 2-story or less.
- ❑ High School and Jr. High School classrooms are in separate wings as is on the second floor. Jr High Science is on this floor.
- ❑ Guidance and the Nurse are located in the connecting wing between the two schools.



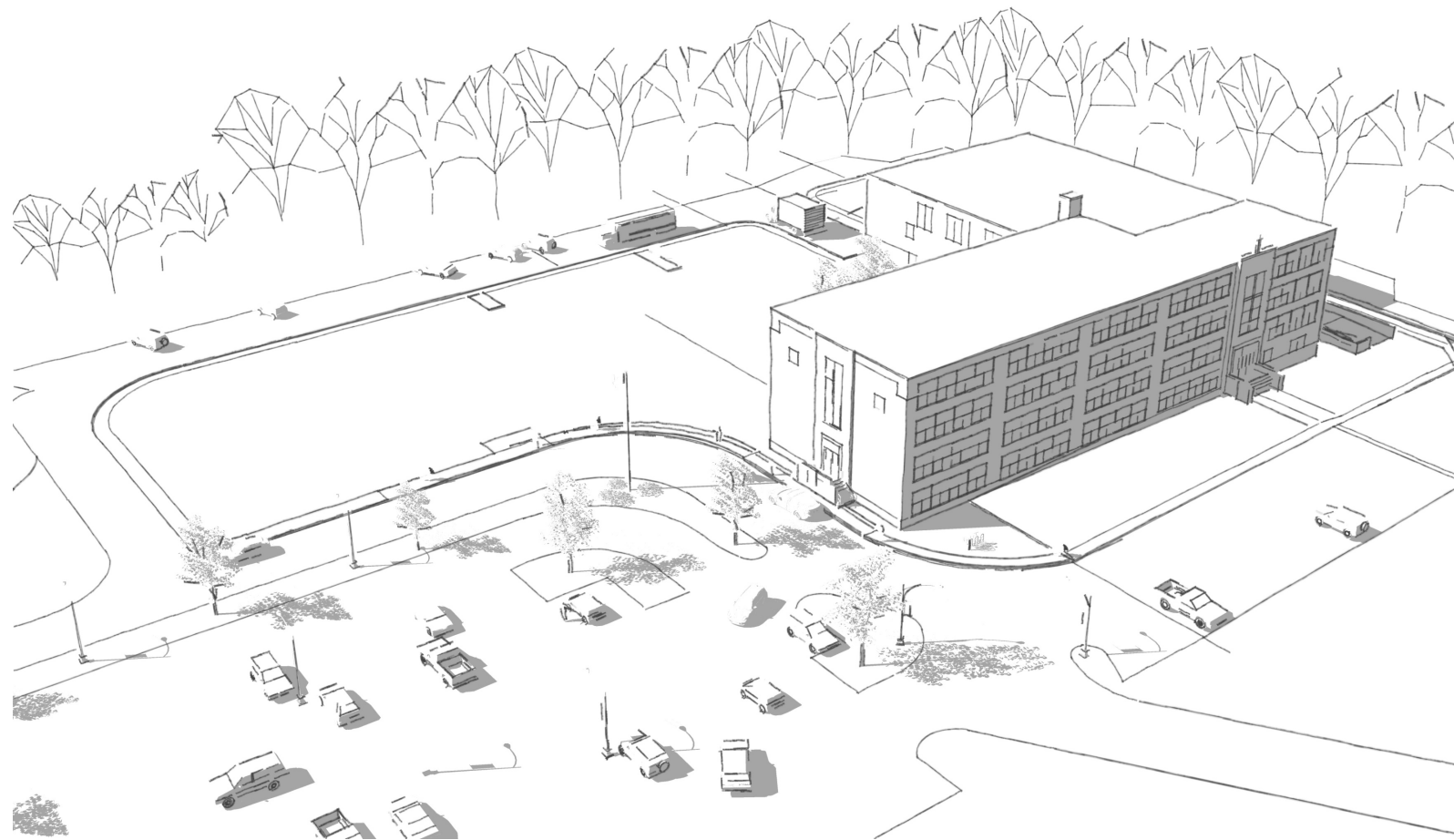
Fourth Floor

- ❑ The Fourth Floor is the smallest.
- ❑ The top floor of the High School houses the Science Labs.
- ❑ The Robotics program is located in the connecting wing near the Science Labs. These are intended to work together in a STEM style environment.
- ❑ Mechanical equipment is mostly located on the roof at this level for easy access.



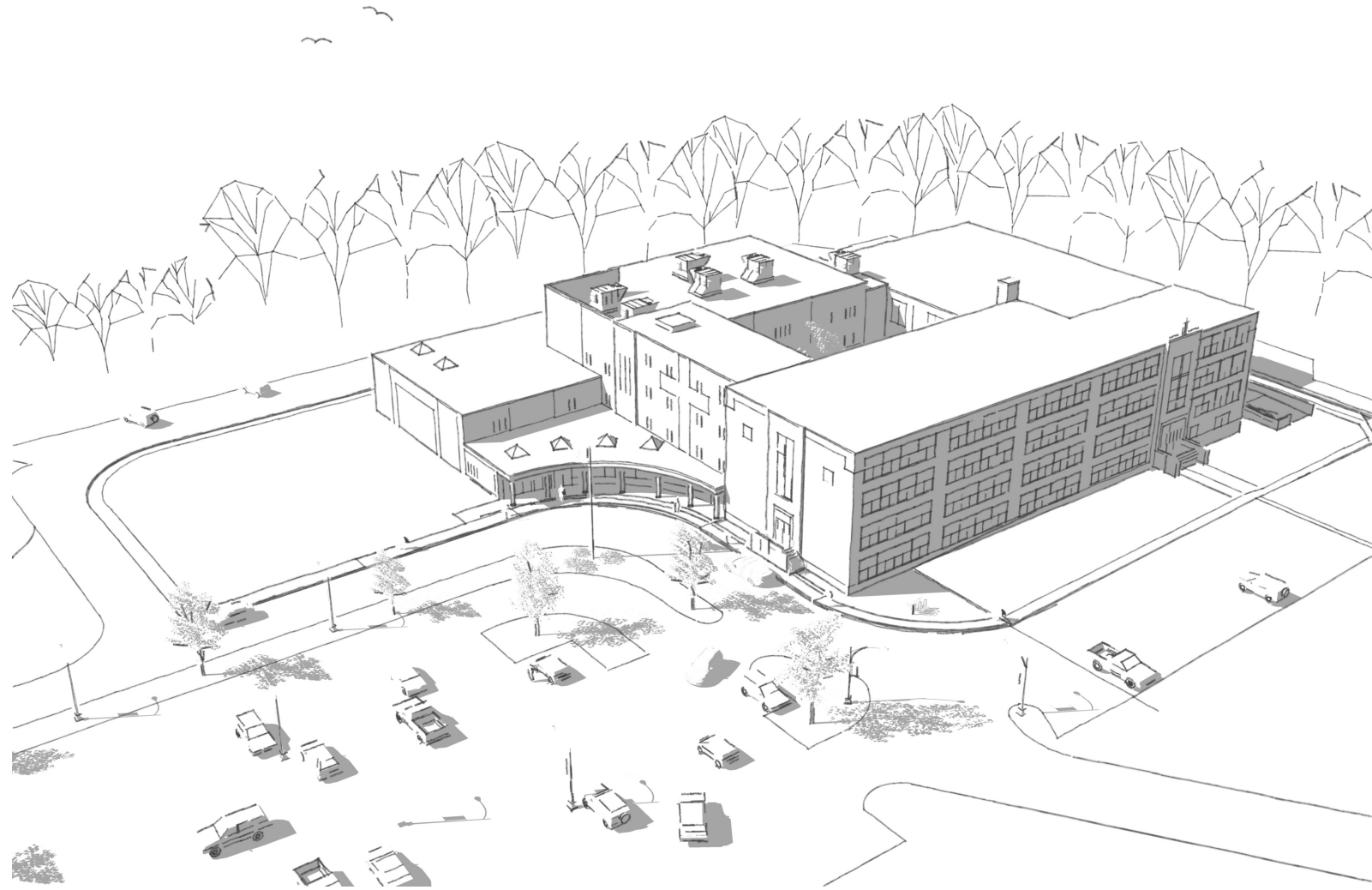
Exterior Views

- ❑ First task is to demolish Alumni Hall and rebuild/expand the parking lot



Exterior Views

- ❑ First task is to demolish Alumni Hall and rebuild/expand the parking lot
- ❑ Phase I of the addition is:
 - St Joseph Junior High Wing
 - Administration Wing
 - Fine Arts Wing



Exterior Views

- ❑ First task is to demolish Alumni Hall and rebuild/expand the parking lot
- ❑ Phase I of the addition is:
 - St Joseph Junior High Wing
 - Administration Wing
 - Fine Arts Wing
- ❑ Phase II – Future Addition:
 - Gymnasium/Auditorium
 - Chapel



Exterior Views

- ❑ First task is to demolish Alumni Hall and rebuild/expand the parking lot
- ❑ Phase I of the addition is:
 - St Joseph Junior High Wing
 - Administration Wing
 - Fine Arts Wing
- ❑ Phase II – Future Addition:
 - Gymnasium/Auditorium
 - Chapel
- ❑ The design of the addition is intended to blend with the existing without mimicking it.
- ❑ The new materials are a mixture of brick, paneling and glass.
- ❑ The sweeping form of the Main Office will connect the wings of the building.
- ❑ The Chapel is highly visible and proudly displays its catholic identity.





TRINITY HIGH
&
St JOSEPH
REGIONAL Jr HIGH
CO-LOCATION PROJECT

Kyle Barker, AIA
Concord, NH
(603)731-7796

QUESTIONS?



 Barker Architects PLLC